

# Panoramic Camera



1H.02001.016641

## 1. Introduction

Thank you for choosing our product, if you have any queries while using them, don't hesitate to ask our agent or after-sale service department for help.

To avoid personal injury and property damage, you need to read this handbook earnestly, you'd better keep it for further reference.

## 2. Safety Instruction

You shall obey safety rules listed in production handbook, and we divided them as warning and notice.



**WARNING** prevent the potential risk of death or serious damage.

1. Do use SELV power.
2. Please contact our agent if the apparatus cannot work properly, don't dismantle them by yourself.
3. Don't expose this product in the rain or humid environment.
4. Make sure the ceiling can support 4 times weight of the product.

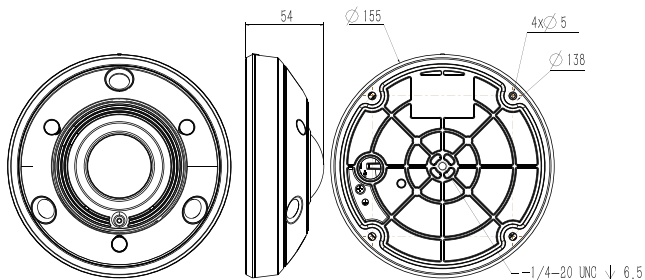


**NOTICE** prevent the potential injury or property loss.

11. Use original packaging to transport or keep the equipment. Avoid pressure, shake and immersion.
2. Keep the lens and sensor clean.
3. Do not focus on the intense light source.
4. Do not set the facility in moist, dusty, and extreme hot or cold, severe radiation environment.
5. Make the facility have good ventilation.
6. Stay away from Electromagnetic sensitive devices.
7. Do not let water or any other liquid get inside of the apparatus.
8. Do remember reset your own username and password after first enter.
9. Cut off electric power before remove micro SD card or USB devices.
10. Installation is not over, please DO NOT peel away the protective film.

### 3. Introduction to product

#### 3.1 Overall dimensions



(unit: mm)

Figure 3.1 drawing of overall dimensions

#### 3.2 Parts Description

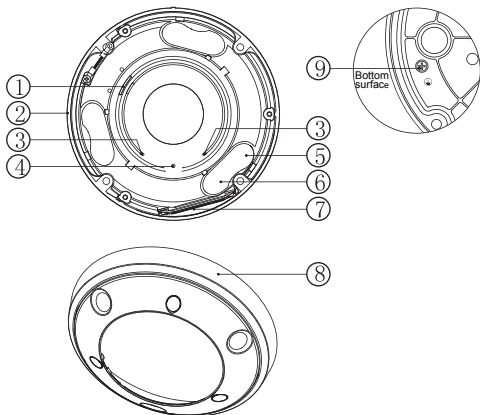


Figure 3.2 Appearance diagram

No.	Description
1	Speaker
2	Body
3	Mic (left / right channel)
4	Photosensitivity sensor
5	White light
6	Infrared light
7	Card cover (hard reset button, micro SD card slot)
8	Outer cover
9	Grounding post

### 3.3 Interface description

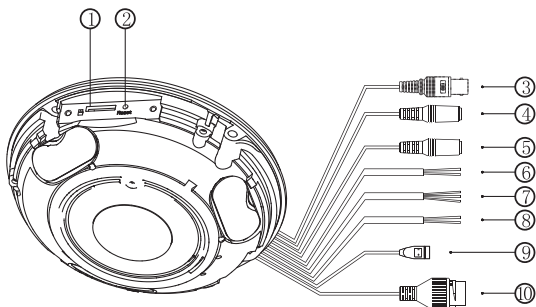


Figure 3.3 Interface diagram

No.	Name of the Interface	Description
1	micro SD card slot	It is recommended to use micro SD card with more than 8G. Before inserting or removing the SD card, please cut off electric power.
2	Hard reset button	After holding for 5 seconds, restore the factory default settings.
3	Analog video	Connect Analog video monitor
4	Audio input	Connect a microphone or other audio source
5	Audio Output	Connect sounds or speakers
6	RS485	Connect RS485 interface of PTZ
7	Alarm input	Connect the sensor
8	Alarm output	Connect the alarm
9	Power supply	Connect DC12V, power fluctuations should be within $\pm 10\%$ . Some models support AC24V power supply, please prevail to the reality.
10	Network interface	When connecting a network cable, it is recommended that the length of the network cable should not exceed 100 m. Some models support POE power supply, please prevail to the reality.

## 4. Installation description

Before installation, please confirm whether the equipment in the box is in good condition and whether all the parts are available. Do not tear off the protective film of the transparent lens cover during the installation process, and ensure that the transparent cover is clean, so as not to make it dirty and affect the effect of the image, tear off the protective film after the installation.

This series of cameras can use ceiling-mounted, hidden line box-type installation, bracket-type installation and other modes of installation, the specific installation steps are as follows.

### 4.1 Ceiling-mounted installation

1. Paste the positioning sticker to the selected mounting position, and drill the mounting hole (B hole) and the outlet hole (A1 hole) in the corresponding position of the positioning sticker, plug in the expansion tube.  
(The "Front" position is at the bottom of the camera image.)

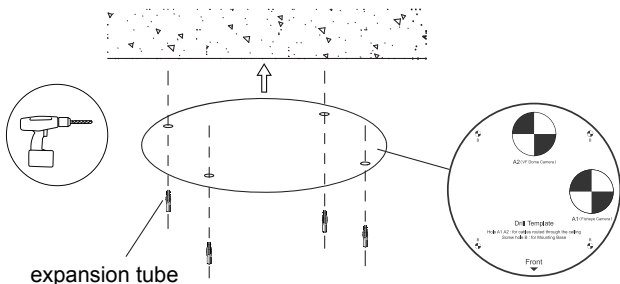


Figure 4.1 Diagram of positioning sticker drilling

2. Loosen 3 captive screws of the outer camera cover and remove the outer cover.

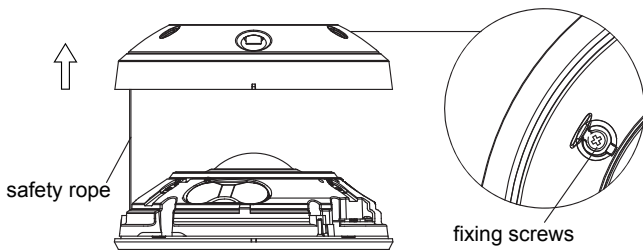


Figure 4.2 Diagram of removal

3. After completing the wiring, secure the camera onto the wall with screws.

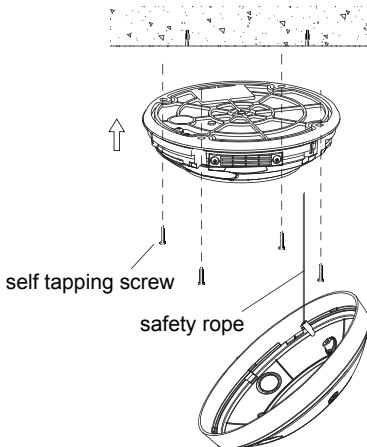


Figure 4.3 Diagram of Installing the camera

4. Install the outer cover and tighten the screws to complete the installation.

Note: Align the outer cover with the bump on the bottom of the body.

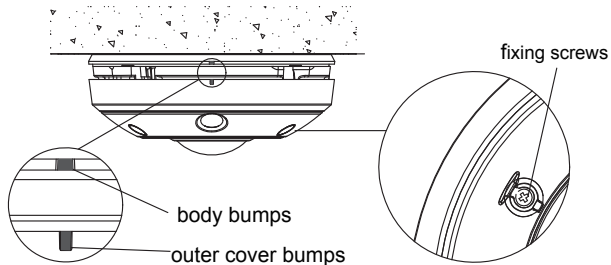


Figure 4.4 Diagram of Installing the outer cover

## 4.2 Installation method of micro SD card

1. Remove the outer cover of the camcorder, loosen the fixing screws on the card cover, and remove the card cover;

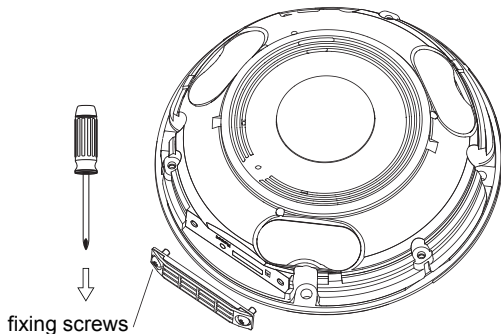


Figure 4.5 description of removing the card cover

2.Insert the micro SD card into the card slot in the direction shown in the figure to complete the installation. When removing the card, press the micro SD card inward gently to eject the card.

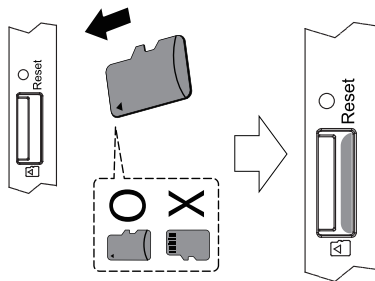


Figure 4.6 Instructions for the installation of micro SD car

### 4.3 Installation method of cable waterproof accessories

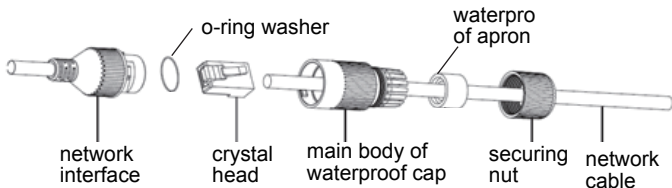


Figure 4.7 Instructions for the installation of waterproof cable

#### 4.4 Hidden line box-type installation

According to the application environment, choose Cylindrical Box (model: A22A) or oblique hidden line box (model: A22B).

Paste the positioning sticker of the hidden line box to the corresponding position. Drill the installation hole and wiring hole in the place corresponding to the positioning sticker; install and fix the oblique hidden line box; the procedure of disassembling the camcorder, please attach to the ceiling type.

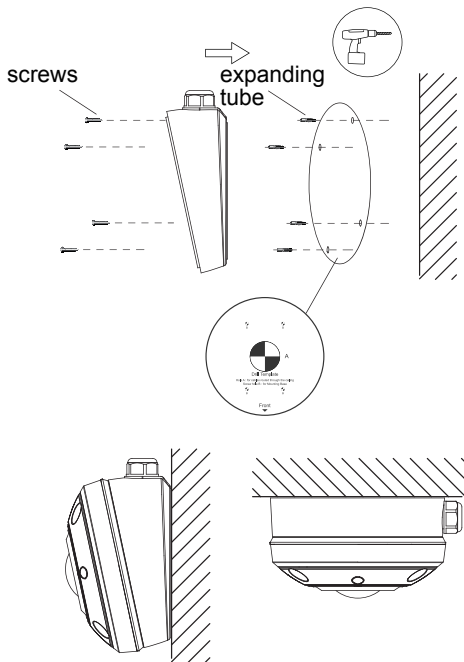


Figure 4.8 Diagram for the installation of hidden line box

## 4.5 Bracket-type installation

According to the application environment, bracket installation (A22), wall bracket (model: A21) or bracket switch plate (type: A24) can be selected.

Install the bracket to the specified position, and fix the adapter plate to the bracket. For the installation procedure of the camera, please refer to the ceiling installation method.

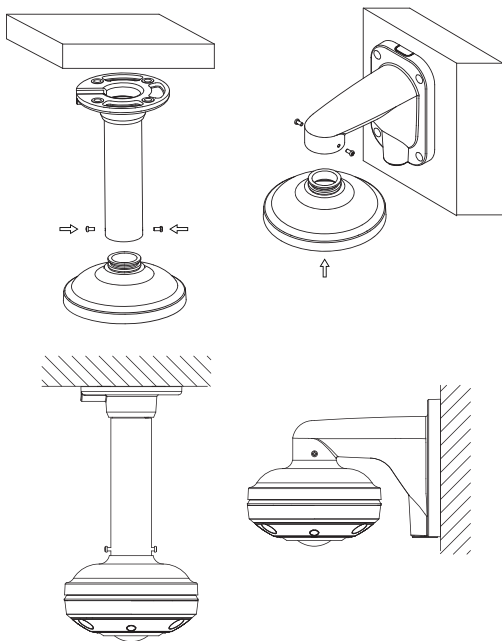


Figure 4.9 Diagram for bracket-type installation

## 5. Quick Guide

### 5.1 WEB Register

Default static IP address is 192.168.1.2, subnet mask:255.255.255.0,gateway: 192.168.1.1, set PC IP and camera IP as the same segment. Use IE browser (above IE8.0)

If you use our product for the first time, plug-in software is needed. Click the link showed in the window, download and install NetVideo.exe.

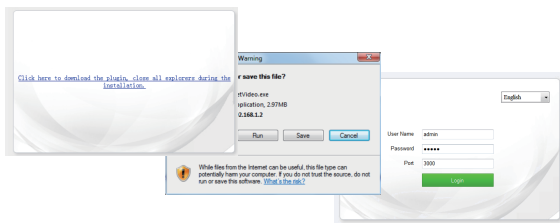


Figure 5.1 Login WEB

After the software installed, reopen browser, Input the device IP address. Input your username and password admin/admin. Then click log in. Some models support online help, click the icon in the upper right corner of the interface, you can get information from online help.

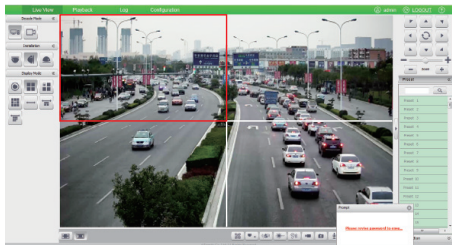


Figure 5.2 Preview interface

## 5.2 Reset default password

Default password is only for the first user, to avoid unnecessary loss, reset it on time. There are 2 ways:

1. If the equipment is default password, after first logging, there will be a prompt box under the right side, click the notice, click **【Modify pwd】** to set the password.

2. Configuration-User Management-User Management, click into **【User Management】**, click **【Modify Pwd】** to set the password.

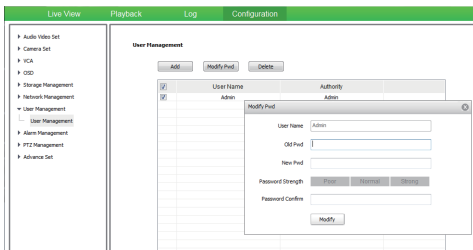


Figure 5.3 Reset default password interface

## 5.3 Reset IP address

To avoid IP conflict, please reset IP address on time. After logging, please follow the steps: Configuration-Network Management-TCP/IP Set, step in the TCP/IP Set to set the configuration. If you want Obtain IP address automatically, check the DHCP option. If you want Obligate IP address manually, make sure IP address and gateway are in the same segment.

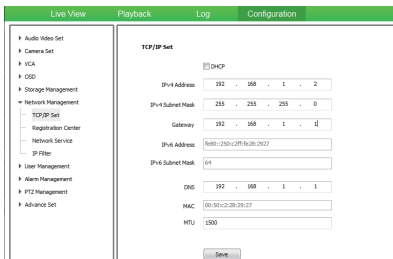


Figure 5.4 Reset IP address interface

## Appendix 1 FAQ

Question discription	Measure
Leak or fogging	Do not open the camera in moist environment Check the seek screw. Reticle and lock make waterproof operation. Front glass suffered hit or press, send camera back to our factory.
Infrared not work	Use standard power Monitoring view beyond the distance. Change the scratched lens or protective cover. Choose night mode.
No reminder for plug-in software for the first login	Enter control pedal, click users control, choose change, set never remind me.
Installation fault	Add the IP address to trusted sites. save plug-in software locally ,run it as administrator
Cannot log in via WEB	ATI video driver problem. Network or settings have some trouble. Wrong username or password. Reinstall the plug-in software.
Instable power	Power adapter doesn't fit the requirement. Power adapter doesn't work in the proper range of temperature.

## Appendix 2 Maintaining introduction

Maintaining matters	Measures
Lens maintaining	Use soft brush or blowing clean the dust. Use mull clean lens and dry it, then use cloth with alcohol clean again.
Transparent protector maintaining	Transparent protector is made of plastic, dust, oil and fingerprint will be bad for image quality. Use soft brush or blowing clean the dust. Use mull clean lens and dry it, then use cloth with alcohol clean again.
Camera glass maintaining	Use clothes clean lens and dry it, then use cloth with alcohol clean again.

## Appendix 3 Anti surge notice

Outdoor productions need to consider the lighting or surge, you can take the following measures.

- 1.Signal line needs to keep away from high voltage at least 50m.
- 2.Set the line under eave.
- 3.Never use overhead line in open area.
- 4.Set up lighting rod in necessary district.
- 5.System must adopt equipotential grounding.

